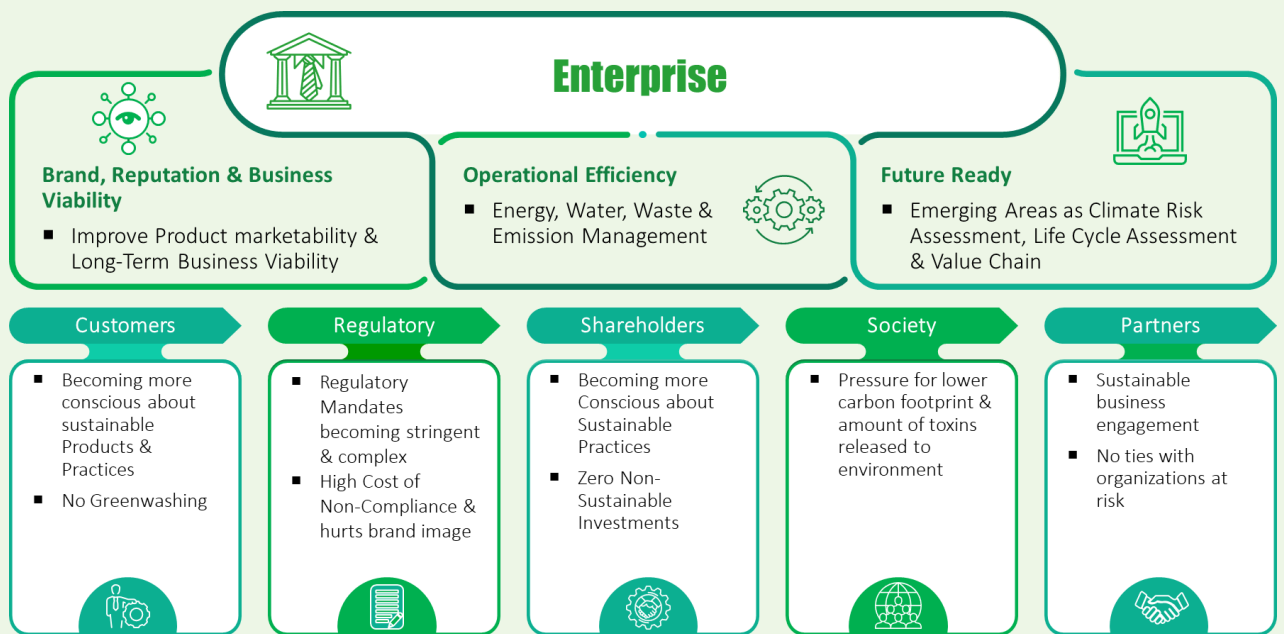


Brief on ITC Infotech's Sustainability Management Digital Solution for Manufacturing & FMCG Companies

Background & Problem Statement

Sustainability Management imperatives will take more centerstage in coming days with increased awareness in the subject, changing regulatory environment, customers becoming more conscious about sustainability practices from manufacturers of products they buy, businesses mandating more transparency from their partners, investors using ESG scores as one aspect to make investment choices, society becoming more conscious and demanding better practices on carbon footprint of businesses & reporting needs becoming more frequent. Enterprises are also focusing in this area to enhance their Brand reputation & improving operational efficiencies. Sustainability is increasingly becoming not only a CXO priority but across the stakeholders in the business value chain and global citizens



This brief summarizes current key challenges, emerging needs, and how we seek to address through Digital Offering.



Current Problems

Manual approach to sustainability data input, usage of excel sheets & lack of access to digital tools for people where data originates

Challenges in Verification / Audit of Data - Lack of Trust

Current Sustainability Reporting Capability Deficiency in Enterprise Tools (e.g., Manufacturing Execution System / Digital Factory)

No automation of Data collection and aggregation

Newer Asks

Extending ESG Disclosures & Reporting across Value Chain Partners

Newer Capabilities on Climate Risk Analysis, Lifecycle Assessment (LCA) & Others

Higher Frequency of External Reporting requirements & evolving needs

AI driven data collection, verification and aggregation. Also predication of emissions and water consumption for corrective actions against the defined targets

Solution Overview



The solution to address the above is a Sustainability Data Technology Platform (Ref: Figure 1) that has capabilities on Data Ingestion, Storage, Transformation, Management, Analytics & providing data for applications that consume same from the Platform.

Data Ingestion from Internal (e.g., ERP, MES) or External Sources into the platform:

To Automate data collection process & the manual transformations currently practiced in typical as-is scenario - Solution integration framework with Connectors will facilitate connectivity to sustainability data source systems. The framework will also enable building specific connectors to external systems as that of Climate Data.



Sustainability Data Technology Platform
Single Source of Truth for Sustainability Data

Data consumption from the platform by applications in various areas of Sustainability:

Integration framework having integrators/ plug-ins for various Sustainability applications:



ESG:
Standard Sustainability Reporting tools like Sphera

01



Supply Chain Performance:
Assess, Classify & Monitor Sustainability performance of Partners. Enable Supply Chain Partners to Report KPIs on the Platform

02



Climate Risk Analysis:
Integrating with external sources of Climate data for feeding into applications for analysis on Climate Risks for the Enterprise

03



Lifecycle Assessment:
Integration with Applications for Environmental Impact of product during its life cycle

04



Materiality Assessment:
Applications identifying areas in Sustainability materially important to an organization

05

Sustainability Data Layer:

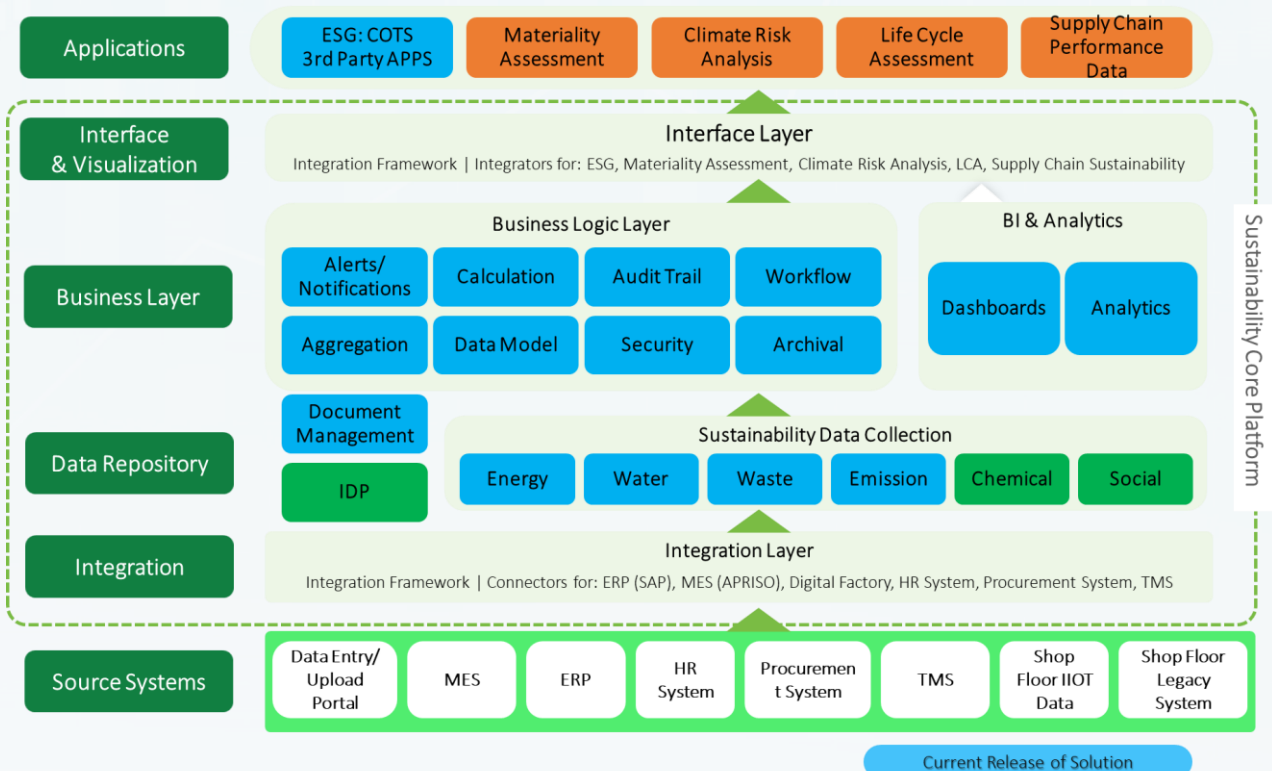
Data Model enabling various functional areas as Energy, Waste, Water, Emission, Chemicals, etc. providing for a single source of truth for sustainability data – a repository for all relevant data as well as associated filesystem data (e.g., Audit Reports, Electricity Bills, etc.). Advanced capabilities as Intelligent Document processing to enable functionalities as scanned document parsing besides various other use cases

Business Logic: Data Governance, Alerts thru’ setpoints, Transformations for KPIs & Data Audit (Traceability)

Workflows:

Configurable workflows to enable and automate data collection, review & approval processes at the Factory, Division & Corporate levels, or any other business hierarchy specific to company

BI & Analytics: Descriptive Analytics & Insights capability commonly used during Review/ Approval process of Sustainability data before periodic reporting as well as for any ad hoc reference. Going forward solution will enable Predictive/ Prescriptive capabilities



As practitioners working in our Group Companies, interactions with global customers and having deep domain understanding, the areas where we primarily differentiate the solution include:



- 01 — Data Ingestion from Sources
- 02 — Data Management
- 03 — Visualizations (Analytics) & Reporting
- 04 — Auditability
- 05 — Enable Data Consumption by External Systems

Compliant with Industry Standard (e.g., GRI), and enabling the full path as data traverses from its source to destination with required transformations. Includes functional areas of Energy, Emission, Water, Waste and Social.



ABOUT ITC INFOTECH

ITC Infotech is a leading global technology services and solutions provider, led by Business and Technology Consulting. ITC Infotech provides business-friendly solutions to help clients succeed and be future-ready, by seamlessly bringing together digital expertise, strong industry specific alliances and deep domain expertise. The company provides technology solutions and services to enterprises across industries through a combination of traditional and newer business models, as a long-term sustainable partner.

For more information, please visit:
www.itcinfotech.com

Follow us on:

