



CASE STUDY

Design and Development

of Industry 4.0 based Predictive Well Integrity Platform



Client

Client is the world's leading Oil Field Services company, headquartered in the US



Business Challenge

- Challenge in obtaining insights about the integrity of subsurface, well head, and pipelines
- Well integrity problems are mainly realized after the failure leading to huge liability
- Increase in operational expenses related unplanned to routine well logging without a view of corrosion growth
- Operators invest equal time and effort on wells that are not prone to well integrity issues as forward-looking data is unavailable



ITC Infotech Solution

- Built advanced predictive well integrity methodology to assess and predict corrosion to recommend a mitigation action plan
- Designed risk analysis algorithms to accurately estimate financial, environmental, and HSE risk in well logging
- One-stop dashboard for data aggregation, visualization, risk analysis, and predictive well integrity results
- Built a scalable solution for accommodating multiple field assets and locations



Proactive
Planning



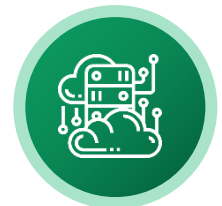
Optimize
Maintenance
Cost



Adherence
to Regulatory
Compliance



Modular Solution
to Accommodate
more Services



Integrated
Data Delivery
Platform

Business Benefits

Operational cost reduction by 10% through focusing on most critical wells

Reduction of well logging due to preventive maintenance carried based on the tool prediction

Visualization of well integrity for a field, allowed users to evaluate issues timely & suggest recommendations

Achieved compliance with regulatory requirements



About ITC Infotech

ITC Infotech is a leading global technology services and solutions provider, led by Business and Technology Consulting. ITC Infotech provides business-friendly solutions to help clients succeed and be future-ready, by seamlessly bringing together digital expertise, strong industry specific alliances and deep domain expertise. The company provides technology solutions and services to enterprises across industries through a combination of traditional and newer business models, as a long-term sustainable partner.

www.itcinfotech.com

