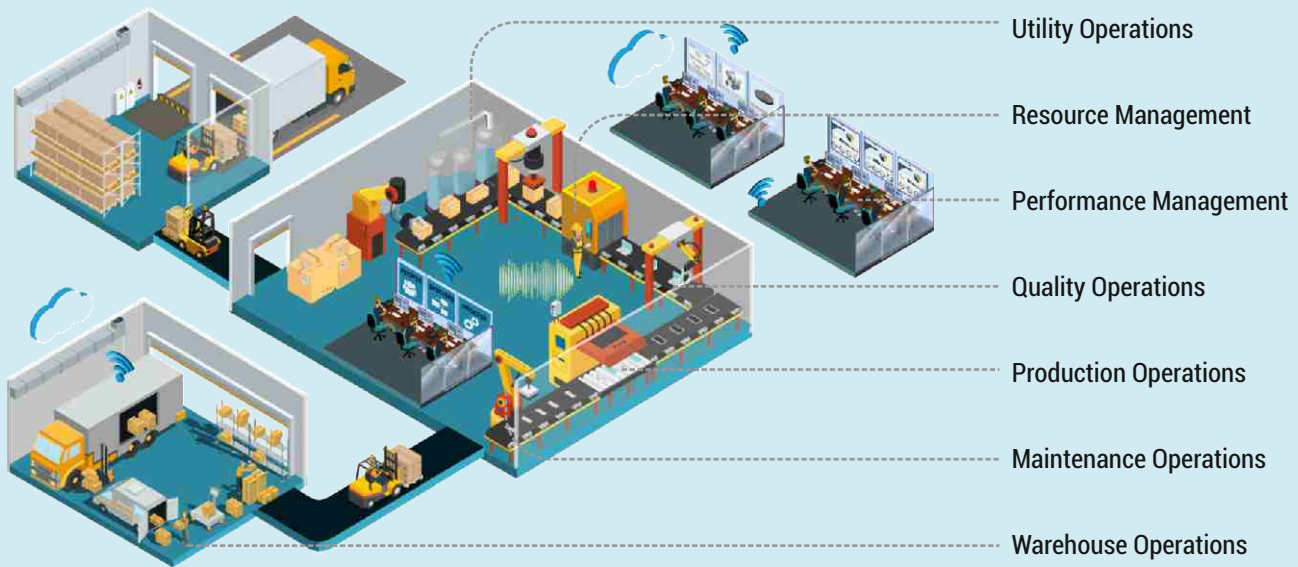


# MANUFACTURING OPERATIONS MANAGEMENT (MOM)

Powered by Digitaligence@work

Global manufacturers partner with ITC Infotech to create end-to-end smart integration across their operations through a cutting-edge Manufacturing Execution System (MES). We help clients integrate manufacturing units across geographies, exchange Manufacturing Operation Management (MOM) details and capture data across supply chains – enabling real-time execution solutions for production, logistics and warehousing, quality control and assurance, time and labor management, along with maintenance, containment and spill management.

# Smart Factory Concept and MES Linkages



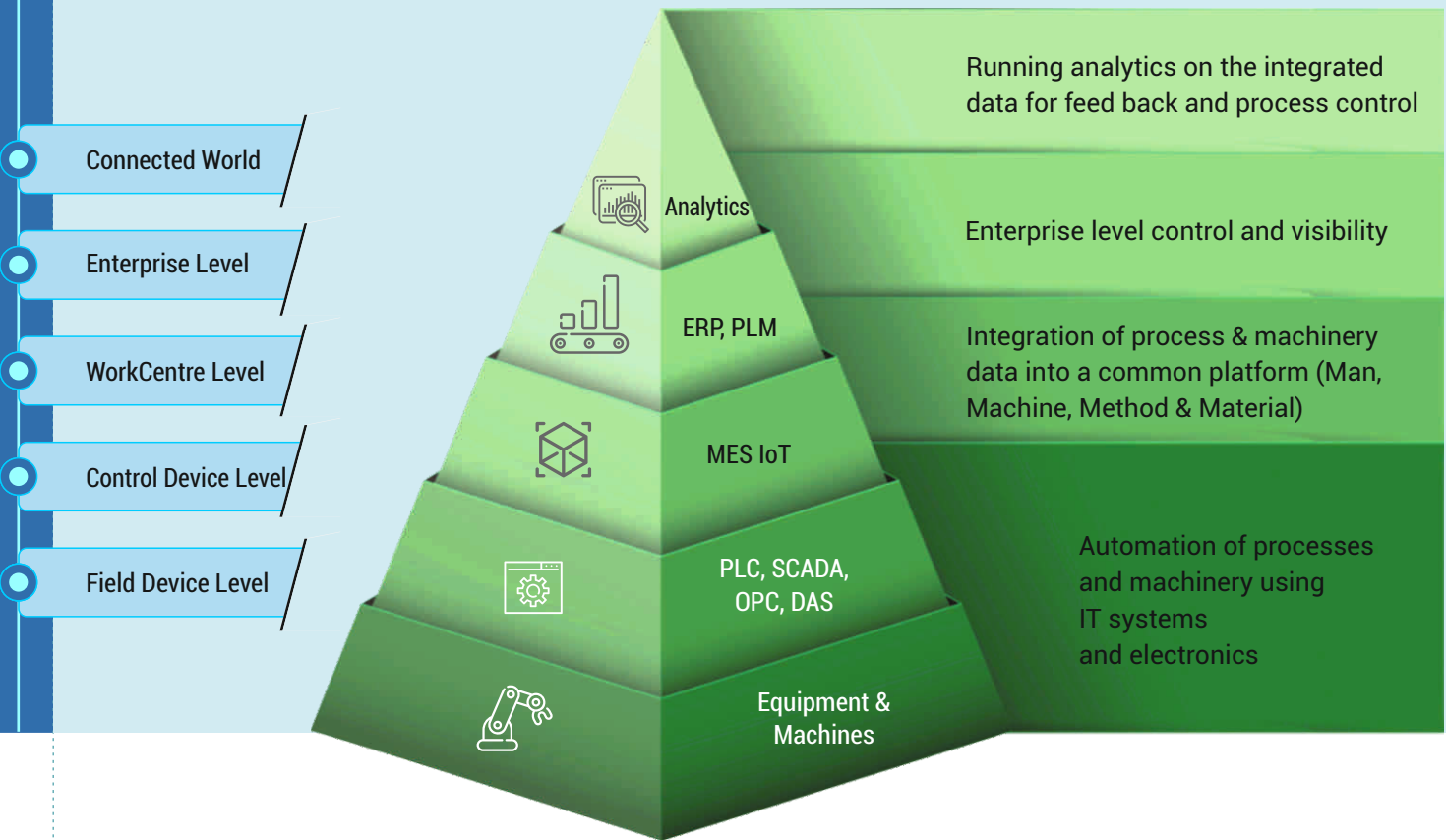
## MES Systems : Global Drivers

Consistency of process enforcement across businesses	Enable Traceability of Process and Product	Enable Integrated Data Reporting and Analysis	Enhancing & Ensuring Process & Product quality
Standardization of processes across sites	Enable Product and Data Integrity	Higher Production Process Efficiency	

Coordinate and Synchronize People, Processes, Equipment, Tooling and Materials on a Global Scale with an Enterprise Manufacturing Execution System !!

## MES Systems : Key Functionalities

<p><b>PRODUCTION</b> Deliver manufacturing excellence to one plant floor or many – across the globe</p>	<p><b>QUALITY</b> Unify quality across manufacturing operations for a comprehensive, enterprise approach to quality management to achieve sustained manufacturing excellence</p>	<p><b>WAREHOUSE</b> Extend manufacturing excellence to the warehouse with a unified solution that synchronizes materials with production</p>
<p><b>MAINTENANCE</b> Synchronize maintenance management with production and quality across plant activities for greater equipment uptime, manufacturing productivity and excellence</p>	<p><b>TIME &amp; LABOR</b> Coordinate labor with all plant activities to drive productivity and manufacturing excellence</p>	<p><b>REPORTS &amp; DASHBOARDS</b> Achieve real-time enterprise manufacturing intelligence to improve visibility, synchronization and control</p>



## ITC Infotech : MES Portfolio

150+ MES  
Consultants

Over 15 Years  
of MES experience

Deployments in  
over 20 countries

MES "Centre of Excellence" to build talent, deliver prototypes, PoCs and drive early adoption

Pre-built MES templates for specific industry verticals  
Consumer Goods, Industrial Manufacturing

End to end Automation and Integration from  
Control systems, Auto-guided vehicles

Accelerators for Deployment First of its kind  
DevOps Framework for MES


Focused investments in Industry 4.0 Solutions  
with MES as the backbone


# ITC Infotech : MES Value Proposition (ID2E Template)


Integration with Business Systems (ERP, PLM, BI Tools etc.)

Real Time Shop floor KPI's, Dashboard's, Manufacturing Analytics' & Global Reports

Material Synchronization	Advanced Quality	Asset Care & History	Factory Logistics
Track and Trace	Product Recall	Skill & Training Management	Kanban, JIS, JIT
Output and Waste	Genealogy and Traceability	Attendance, Task Monitoring	FG and Dispatch
TAKT and Cycle Time	CAPA and 8D Process	Maintenance Execution	WIP & Material Management
Process Control and WIP	SPC and CUSUM	Maintenance Scheduling	Picking & Issue
Material Verification	Visual Quality	Tool Monitoring	Inventory & Storage
Routing Management (Process)	Testing Management	Downtime Management	Receiving & Put Away
Work Instructions & SOPs	Specification Management	Machine Data Collection	
Work Order Management	Supplier Quality		
BOM Management			

 PRODUCTION

 QUALITY

 MACHINE & LABOR

 WAREHOUSE

Integration with Shop Floor Automation (Machines, Robots, CNCs, AGVs, Printers, Quality Equipments etc.)

## ITC Infotech : MES Case Studies

PROJECT OBJECTIVE	SOLUTIONS IMPLEMENTED	KEY REALIZED BENEFITS
Implementation of a Manufacturing Operations Management (MOM) system for a leading FMCG company	<p>A first of a kind all encompassing manufacturing template to ensure end to end operations management:</p> <ul style="list-style-type: none"> <li>Raw material storage &amp; validation</li> <li>Production management, Track and Trace</li> <li>In process and lab quality management</li> <li>Maintenance Management</li> </ul>	<p>OEE improvements by 3-6%</p> <p>Productivity improvements through elimination of NVAs</p>
Global MES program for one of the leading Fortune 500 company in the world	<ul style="list-style-type: none"> <li>A global template covering all the shop floor areas from raw material to finished goods</li> <li>Solution covering warehouse management, primary processing, secondary operations, shop floor quality, lab quality, maintenance, operations excellence through IWS, filter manufacturing</li> </ul>	<p>Improvement in traceability standards by more than 100%</p> <p>Improvement in process compliance by 100%</p>
Strategic Partner for Global MES Implementation for a leading Escalator & Elevators Manufacturer	<ul style="list-style-type: none"> <li>Discrete manufacturing template on Apriso covering machining, high-tech component assembly and final elevator assembly process</li> <li>Unique implementation covering LES (Logistics Execution System) and IES (Installation Execution System) on Apriso</li> </ul>	<p>Cost reduction in the areas of shop floor productivity and machine efficiency</p> <p>Reduction in quality non – conformances and associated risks</p>

### About ITC Infotech

ITC Infotech is a specialized global technology solutions provider, led by Business and Technology Consulting.

ITC Infotech's Digitaligence@work infuses technology with domain, data, design, and differentiated delivery to significantly enhance experience and efficiency, enabling our clients to differentiate and disrupt their business. The company is powered by a growing portfolio of specialized solutions addressing critical business challenges, including: Industry 4.0 solutions (PLM, IoT and Embedded), Customer Value Management, Loyalty, Trade Marketing & Distribution, Supply Chain Optimization, Data Engineering and Analytics, Healthcare Analytics, Digital Banking solutions and Digital Agriculture solutions. The company provides solutions to enterprises in Supply Chain based industries (CPG, Retail, Manufacturing, Hi-Tech) and Services (Banking, Financial Services and Insurance, Healthcare, Airline, Hospitality) through a combination of traditional and newer business models, as a long-term flexible, trusted and sustainable partner.

ITC Infotech is a fully-owned subsidiary of ITC Ltd, one of India's foremost private sector companies and a diversified conglomerate.

[www.itcinfotech.com](http://www.itcinfotech.com) | [contact.us@itcinfotech.com](mailto:contact.us@itcinfotech.com)