



Business-friendly Solutions



Model Based Enterprise Solutions for Digital Engineering

For lower cost of production and reduced time-to-market

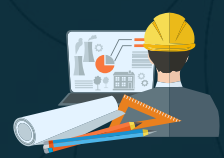




Businesses need to minimize duplication of efforts to reduce time-to-market. 2D drawings are becoming redundant and generation of service documentation needs to be improved to drive productivity.

ON AVERAGE, PER WEEK, ENGINEERS SPEND...

- 21.3 hours creating drawings
- 6.4 hours answering questions or clarifying drawings
- 5.5 hours generating additional drawing documentation



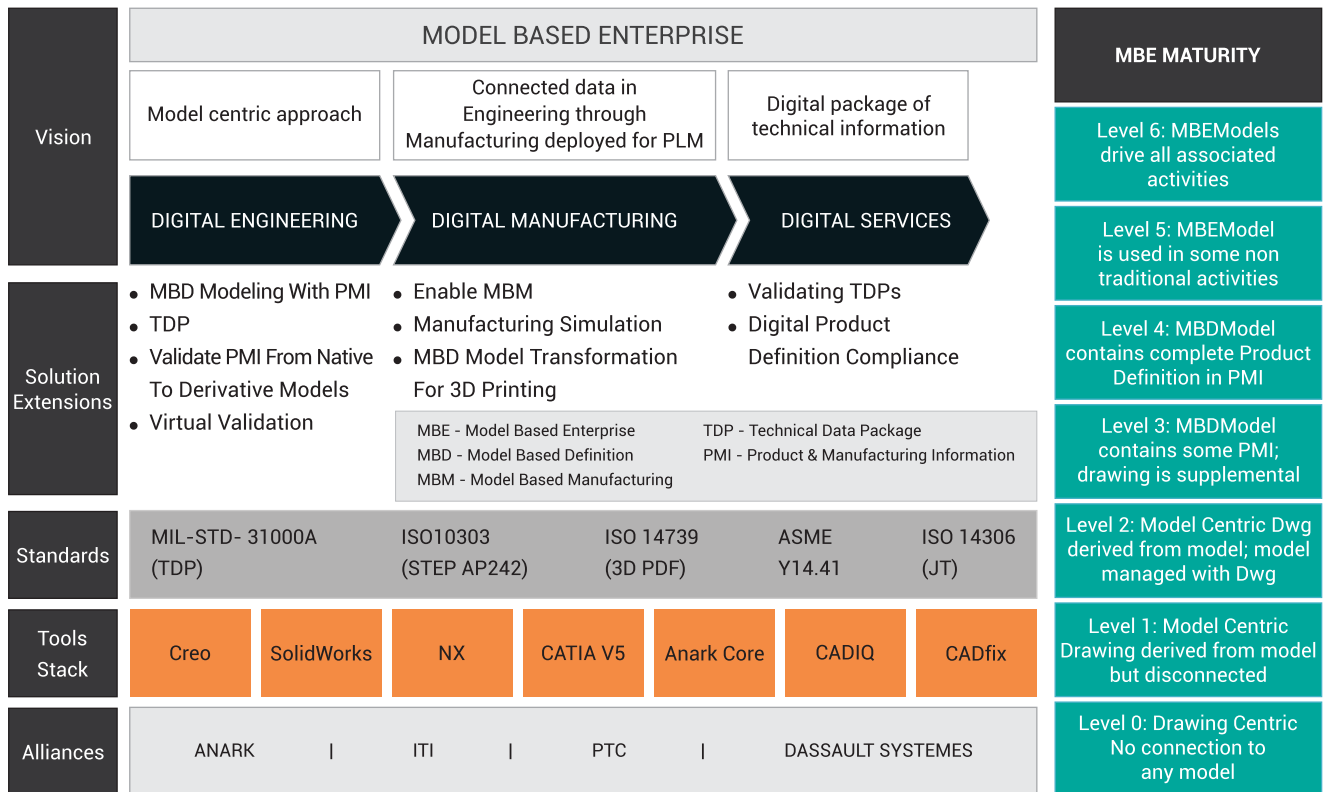
ON AVERAGE, PER WEEK, MACHINISTS SPEND...

- 8.3 hours creating manufacturing or quality documentation
- 4.7 hours answering questions or clarifying documentation
- 4.1 hours generating additional documentation



Source: Simulation design research report 2014

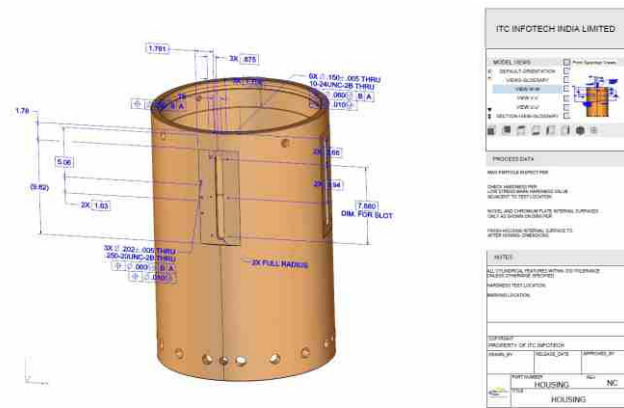
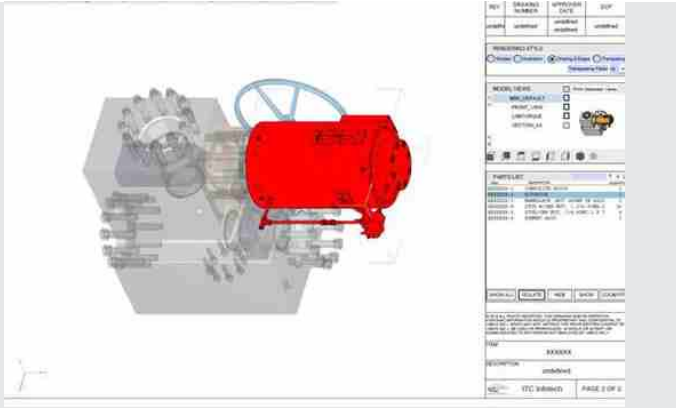
ITC INFOTECH'S MODEL BASED ENTERPRISE SOLUTION – AN OVERVIEW



BUSINESS BENEFITS

- Faster design revisions
- Reduced efforts of designer and manufacturing engineers, leading to reduced time-to-market
- Direct 3D models to rapid prototyping
- Direct 3D models to engineering analysis
- 3D model source across enterprise, driving quality
- Generation of technical manuals directly from 3D model data
- 3D models and assemblies in virtual environment leading to reduced need of prototyping
- Effective Configuration Management

OUR SUCCESS STORIES



Client: An Oil & Gas Major Upstream

SCOPE & BACKGROUND

- To create a 3D PMI model and its associated information that fully define the product

INPUTS

- 2D drawings, 3D models
- Modeling standards/ Best Practices
- BOM Structure, associated product & process information, and configuration control information

APPROACH

- Identified the PMI information from the existing drawings and process data
- Generated 3D MBD models incorporating the PMI information
- Generate Technical Data package

DELIVERABLES

- 3D models with PMI data per client standards
- 3D PDF for Parts, Assemblies and Manufacturing Process

BUSINESS BENEFIT

- Managing CAD data in single file by eliminating the 2D drawing
- Saving 2D drawing creation time
- 3D models reduce non-conformance issues compared to 2D drawing
- Infinite viewpoints and exploded views of assemblies
- Direct to rapid prototyping
- Direct to engineering analysis (stress, thermal, interference fit, tolerance stack-up, etc.)
- Reduced manufacturing lead time and cost
- Generation of technical manuals directly from model data

Client: An Oil & Gas Major Downstream

SCOPE & BACKGROUND

- To Create 3D PMI models using DimXpert, for NPI products

INPUTS

- Requirement specifications
- Modeling standards/ Best Practices
- Purchased components list

APPROACH

- Collected necessary details to build the Concept models.
- Different concepts shared with customer for Design reviews of various configurations.
- Generated 3D PMI using DimXpert
- Generate Technical Data package

DELIVERABLES

- 3D models with PMI data incorporating design intent per client standards using SolidWorks
- 3D PDF for Parts, Assemblies and Manufacturing Process

BUSINESS BENEFIT

- Managing CAD data in single file by eliminating the 2D drawing
- 3D models reduce non-conformance issues compared to 2D drawing
- Infinite viewpoints and exploded views of assemblies
- Direct to rapid prototyping
- Direct to engineering analysis (stress, thermal, interference fit, tolerance stack-up, etc.)
- Reduced manufacturing lead time and cost
- Generation of technical manuals directly from model data

About ITC Infotech

ITC Infotech is a specialized global technology solutions provider, led by Business and Technology Consulting.

ITC Infotech's Digital@work infuses technology with domain, data, design, and differentiated delivery to significantly enhance experience and efficiency, enabling our clients to differentiate and disrupt their business. The company is powered by a growing portfolio of specialized solutions addressing critical business challenges, including: Industry 4.0 solutions (PLM, IoT and Embedded), Customer Value Management, Loyalty, Trade Marketing & Distribution, Supply Chain Optimization, Data Engineering and Analytics, Healthcare Analytics, Digital Banking solutions and Digital Agriculture solutions. The company provides solutions to enterprises in Supply Chain based industries (CPG, Retail, Manufacturing, Hi-Tech) and Services (Banking, Financial Services and Insurance, Healthcare, Airline, Hospitality) through a combination of traditional and newer business models, as a long-term flexible, trusted and sustainable partner.

ITC Infotech is a fully-owned subsidiary of ITC Ltd, one of India's foremost private sector companies and a diversified conglomerate.

www.itcinfotech.com | contact.us@itcinfotech.com