



Business-friendly Solutions

PTC Windchill® 11.0 Upgrade Services Factsheet

ITC Infotech offers specialized Windchill® 11.0 Upgrade Packages – Simple, Medium and Complex, wherein customers choose the best fit Upgrade package as per their business requirements. We also help you plan and redesign your PLM infrastructure, support and maintenance needs to suit the latest version.

Implement new & enhanced Windchill® 11.0 functionalities

SMART	CONNECTED	COMPLETE	FLEXIBLE
<ul style="list-style-type: none"> • Role based Apps with ThingWorx Navigate • Multi-faceted search • Improved Product Structure Browser, CAD Workspace, & Administrative task Management 	<ul style="list-style-type: none"> • Connected quality • Better Requirements traceability • New Connected performance advisor 	<ul style="list-style-type: none"> • Complete Multi-Dimensional BOM • Model-based –delivering dynamic CAD data downstream to enable a parts-centric design approach • Launch the full PTC Creo View client in PTC Windchill without using a browser plug-in 	<ul style="list-style-type: none"> • Subscription Pricing • Cloud options including fully hosted SaaS • Flexible, scalable licensing model

Cost effective & quick Upgrade to Windchill® 11.0 – Technical Upgrade Packages

	Simple	Medium	Complex
Source Windchill Application Version	> 10.0	> 9.0	> 8.0
Number of Primary Objects (Doc, Part, CAD, Change Objects)	< 200,000 per type	< 750,000 per type	< 1500,000 per type
Vault Size	< 500 GB	< 1 TB	< 5 TB
No. of Environments	3 Environments DEV, TEST, PROD	4 Environments DEV, TEST, QA, PROD	5 Environments DEV, TEST, QA, STG, PROD
Number of Rehearsals	2 Rehearsals	3 Rehearsals	4 Rehearsals
Execution Duration	11 Weeks	13 Weeks	15 Weeks
Remote Post Production Support	1 Week	2 Weeks	2 Weeks
Pricing	\$40,000 ~ \$58,000	\$55,000 ~ \$78,000	\$70,000 ~ \$98,000

Note : Client specific customization and Integration - Can be estimated as additional service

ITC Infotech Value Add

EXCLUSIVE – ITC VALUE ADD

	S	M	C
Free 2 Days Onsite Assessment & Workshop			
Free Training Updates for new features of 11.0 Release	✔	✔	✔
Quantitative Data Validation Report with 100% data coverage	✔	✔	✔
Free Extended 1 week of Post Go Live Support	✔	✔	✔
One Free Re-hosting of Production Server post upgrade		✔	✔
Free One Time Performance / Response Time Reports		✔	✔
Configure & Setup Visualization Service with 1 CREO CAD Worker		✔	✔
Free Integration with MS Active Directory for ~250 users		✔	✔
Free PSM Installation & Basic Configuration for Monitoring			✔
Configure & Setup PTC Navigate for Complex Category Upgrades			✔



Technical Upgrade – Package Details

Package Inclusions / Assumptions

- Only the following Windchill Modules : PDMLink, ProjectLink, MPMLink, PartsLink
- With or without MS AD Integration
- SOURCE & TARGET systems can be monolithic or cluster
- WINDU execution is successful prior to the project kick-off

Package Exclusions (Out of Scope)

- Any New Implementation/ Configurations/ Customizations
- Porting of Existing Customization AND Integrations
- Data Migration / Data Transformation / Data Cleansing
- Resolution of Any Existing Issues
- Performance Tuning of Upgraded System
- Training & Adoption Services

Prerequisites from Customer

PRE-ENGAGEMENT

- WINDU Log of the SOURCE Production Environment
- Environment/ System Details of all existing SOURCE Environment

PROJECT KICK-OFF

- VPN Access will be provided by customer
- Customer will provide an Environment where Production Environment can be cloned for Rehearsal Upgrades
- ITC Infotech will be granted Admin Privilege over Environments planned for Upgrade

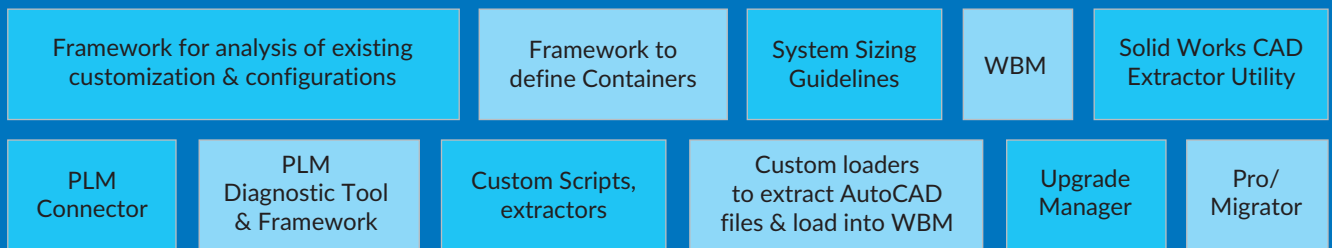
- Admin Credentials of Windchill & LDAP will be provided for Upgrade
- PTC Account will be provided to download installable & raise PTC TS calls for any upgrade issues

ASSUMPTION

- Network, System and Database administrators will be available if required during the initial system setup and upgrade execution
- Setting up database and network/ system admin related activities will be managed by customer
- All system back-ups will be performed by the customer

ITC Infotech Tools & Frameworks:

Tools & Frameworks:



PLM Business Process Upgrade for improved productivity

ITC Infotech provides advisory services on PLM business process upgrade for improved productivity, cycle time and quality of product development. Our team of PLM experts will critically examine your current business processes and the customizations that have been enabled to facilitate them, and define a future roadmap to de-scope unwanted customizations and incorporate new business requirements for faster time-to-value.

Advisory Areas:

OPERATIONAL

- Process & Data Harmonization to support business growth
- PLM system Maturity roadmap definition

IT

- Site / Portfolio Consolidation across globe
- Legacy data Modernization
- Product / Technology Transition
- Vendor Collaboration / Data Exchange

MERGER & ACQUISITION

- Knowledge asset transfer for
- Merger & Acquisitions
- Divestiture

SUCCESS STORY

Leading Medical Devices Manufacturer

Detailed assessment of the PLM environment - existing infrastructure, processes and roles impacted by upgrade

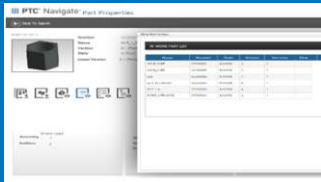
- Upgraded Windchill 9.1 M010 to Windchill 11
- Newly designed PLM Infrastructure for high availability and scalability
- Introduced role based apps
- Guidance on integration with Integrity ALM



ThingWorx Navigate® for faster user adoption

ITC Infotech offers ThingWorx Navigate® specific services to implement, deploy and custom build role based apps for executing assigned tasks in Windchill® 11.0. This self-serve of product data sourced from multiple systems in a simple, role-based interface empowers your product development teams leading to faster adoption of PLM and hence greater ROI.

Some use cases with PTC ThingWorx Navigate®:

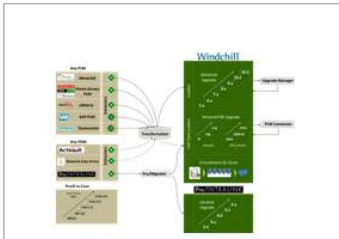


Enabling Parts Status –
In work and all the counts of parts where used, pending changes, related documents, part status and sourcing status shown on the screen

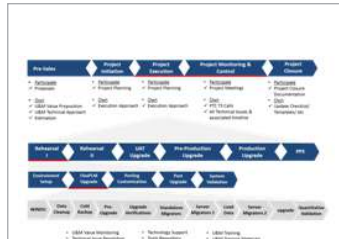


Show user specific assigned tasks from Windchill® to ThingWorx using Navigate. clicking on view it will redirect to respective tasks in Windchill®

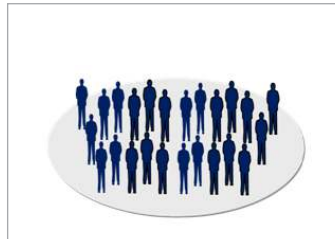
Value Proposition: On schedule, Low risk, Delivery assured



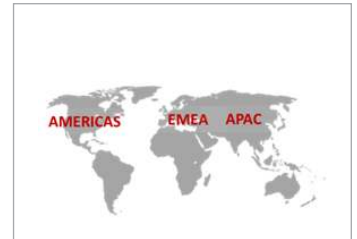
Save Money / Reduced Cost
Reusable Accelerators
200+ Tools/ Accelerators



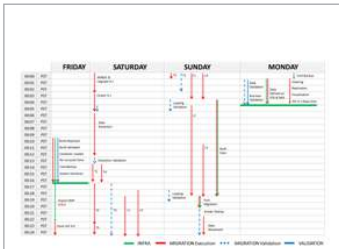
Mitigate & Reduce Risk
Consistent & Proven Process
150+ Templates/ Checklists



Trusted Experts
World's Largest PLM U&M CoE
200+ U&M Specialized People



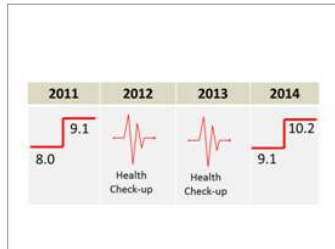
Cost Effective
Onsite/Offshore Model with
Footprints in all Geographies



Minimum Downtime
Proven Cut-Over Game Plan
ETL of **100 Million** in 72 Hrs.



Absolute Quality Assurance
Assured Accuracy & Integrity
Automated Validators



Value Monitored
Annual Health Check-up
10 Dimensional Reporting

- ✓ Fixed Price Contract
- ✓ On Schedule
- ✓ Migration Data Quality
- ✓ Status Reporting
- ✓ Value Delivered

100% Customer Satisfaction
Acceptance/ Adoption are tracked from Day-01

About ITC Infotech

ITC Infotech helps Customers digitize their end-to-end product lifecycle processes to enable rapid innovation, reduce time-to-market, optimize their product development, manufacture & service their products efficiently by leveraging our expertise in Engineering Design, Product Lifecycle Management, Application Lifecycle Management and Service Lifecycle Management. Our solutions bring together the best of industry practices and next generation technologies in Cloud, Analytics, IoT and Embedded Systems to truly enable future readiness for businesses.

ITC Infotech is a fully owned subsidiary of ITC Ltd, one of India's most admired companies.

www.itcinfotech.com | contact.us@itcinfotech.com